

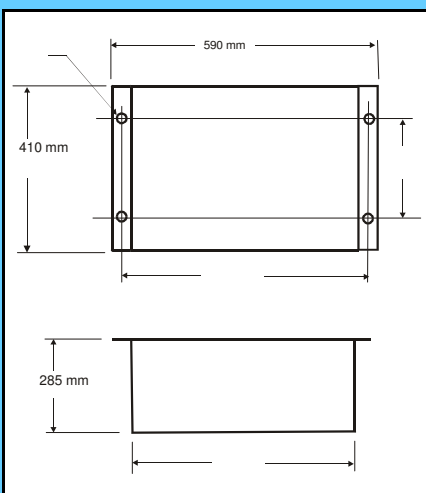
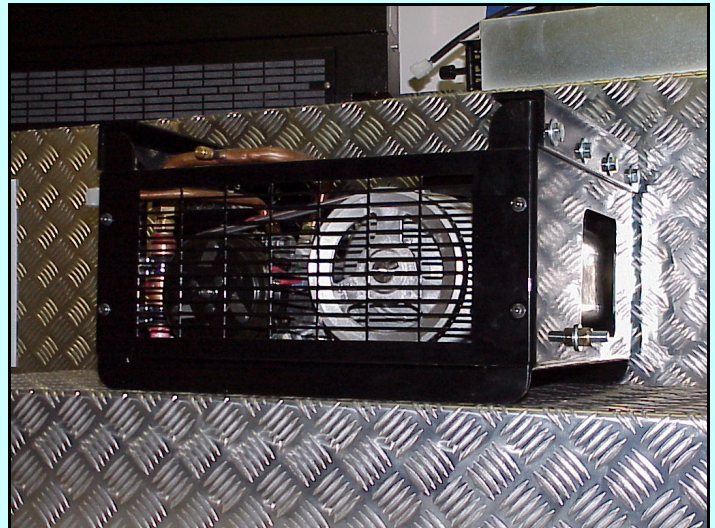
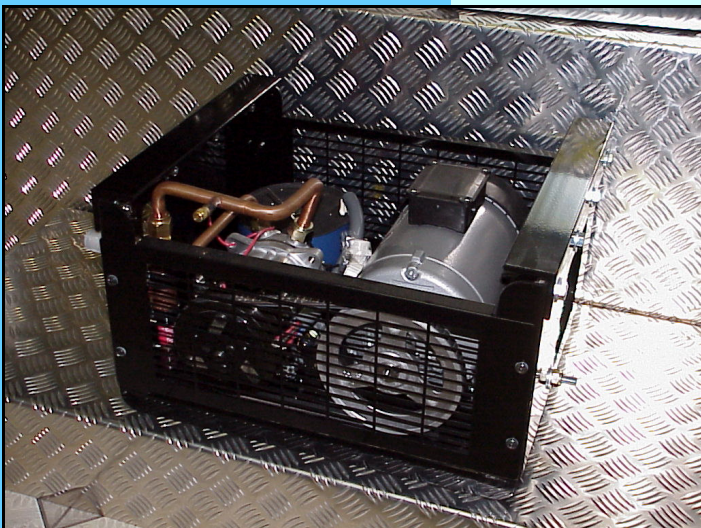


Transport Air Conditioning
& Refrigeration

Simply Better by Degrees

Electric Standby Unit

1.7 Kilowatts - 240 Volts



The Crisp-Air 240v Electric Standby Unit comes in both 12 & 24 volt Configurations. The unit can be fitted as part of a new Crisp-Air System on your Van or Truck, However due to its Clever Design the unit can also be fitted to just about any existing Off engine refrigeration system that requires Electric Standby, no matter what brand the existing Refrigeration system is!

Unit Measures 480mm Long x 406mm Wide x 270mm High

Unit Includes

- 240v 1.7kw Electric Motor.
- 55 amp Transformer.
- Rectifier Assembly.
- Pressure Regulator Valve.
- Crisp-Air Junction block valve with discharge check valve & fittings.
- 15 Amp Wall Socket
- Chassis Mount Brackets Included

Crisp-Air Pty Ltd
17 Colebard St (East)
Acacia Ridge Qld 4110

Phone: 07 - 3277 3299
Fax: 07 - 3275 1180
Email: sales@crisp-air.com.au

All Crisp-Air units are designed and built right here in Queensland and are designed to suit our harshest conditions. Our vast industry experience coupled with our comprehensive warranty on our systems will give you total peace of mind, Ultimately providing more time for your machine to be making money, not down and costing you money